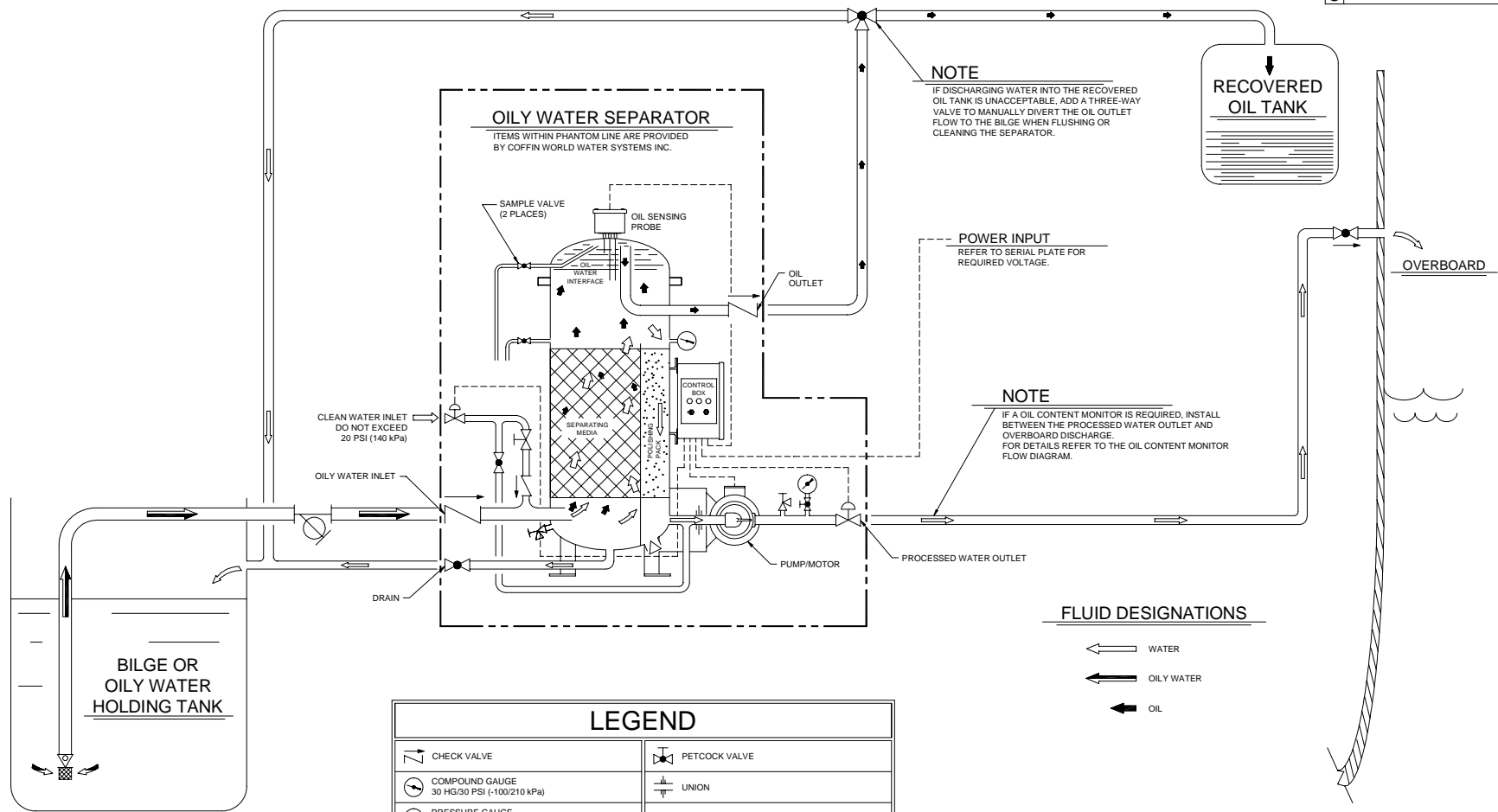


REVISIONS		
LTR	DESCRIPTION	DATE
C	SEE E.O.	94.07.30



NOTE
IF DISCHARGING WATER INTO THE RECOVERED OIL TANK IS UNACCEPTABLE, ADD A THREE-WAY VALVE TO MANUALLY DIVERT THE OIL OUTLET FLOW TO THE BILGE WHEN FLUSHING OR CLEANING THE SEPARATOR.

POWER INPUT
REFER TO SERIAL PLATE FOR REQUIRED VOLTAGE.

NOTE
IF A OIL CONTENT MONITOR IS REQUIRED, INSTALL BETWEEN THE PROCESSED WATER OUTLET AND OVERBOARD DISCHARGE. FOR DETAILS REFER TO THE OIL CONTENT MONITOR FLOW DIAGRAM.

FLUID DESIGNATIONS

- ← WATER
- ← OILY WATER
- ← OIL

LEGEND	
⤴	CHECK VALVE
⊕	COMPOUND GAUGE 30 HG/30 PSI (-100/210 kPa)
⊙	PRESSURE GAUGE 0-60 PSI (0-420 kPa)
⊘	MANUAL SHUTOFF BALL VALVE
⊚	SOLENOID VALVE (2-WAY)
⊚	PRESSURE RELIEF VALVE VESSEL SET @ 30 PSI (210 kPa) PUMP DISCHARGE SET @ 60 PSI (420 kPa)
⊚	PETCOCK VALVE
⊚	UNION
---	ELECTRICAL CABLE
⊚	STRAINER 60% OPEN 1/8"-3/16" (3-3MM) PERFORATIONS CUSTOMER PROVIDED
⊚	FOOT VALVE CUSTOMER PROVIDED
⊚	MANUAL NON-RETURN VALVE CUSTOMER PROVIDED

<small>UNLESS OTHERWISE SPECIFIED DIMENSIONS ARE IN INCHES TOLERANCES ARE: FRACTIONS DECIMALS ANGLES ± 1/16" ± .01 ± .5° XXX ± .005</small>	CONTRACT NO.	 Coffin World Water Systems Design & Manufacture of Water Treatment Systems	
	APPROVALS		DATE
	DRAWN J. DUSZYNSKI		86.12.04
	CHECKED J. DUSZYNSKI		86.12.04
MATERIAL	DESIGNED	PIPING & FLOW DIAGRAM OILY WATER SEPARATOR HELI-SEP MODELS 500 THRU 10000	
APPROVED			
FINISH			
DO NOT SCALE DRAWING	<small>THIS DRAWING CONTAINS PROPRIETARY INFORMATION AND SHALL NOT BE USED OR DISCLOSED WITHOUT PRIOR WRITTEN AUTHORIZATION.</small>	SIZE: D SCALE: NONE REVISION: C DRAWING NO.: 550 SHEET 1 OF 1	