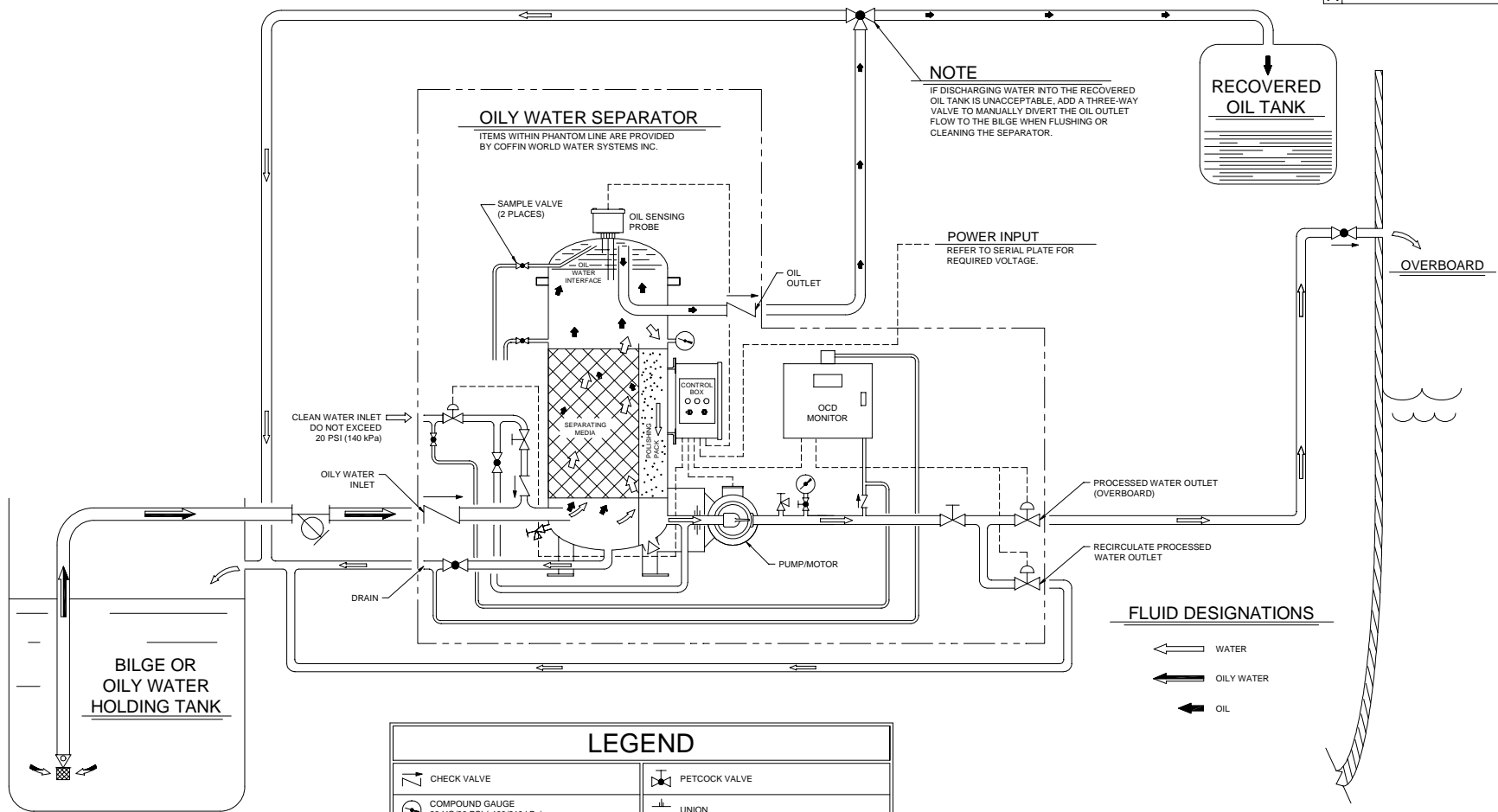


REVISIONS		
LTR	DESCRIPTION	DATE
A	SEE E.O.	94.12.13



LEGEND	
CHECK VALVE	PETCOCK VALVE
COMPOUND GAUGE 30 HG/30 PSI (-100/210 kPa)	UNION
PRESSURE GAUGE 0-60 PSI (0-420 kPa)	ELECTRICAL CABLE
MANUAL SHUTOFF BALL VALVE	STRAINER 60% OPEN 1/8"-3/16" (3-9MM) PERFORATIONS CUSTOMER PROVIDED
SOLENOID VALVE (2-WAY)	FOOT VALVE CUSTOMER PROVIDED
PRESSURE RELIEF VALVE VESSEL SET @ 30 PSI (210 kPa) PUMP DISCHARGE SET @ 60 PSI (420 kPa)	MANUAL NON-RETURN VALVE CUSTOMER PROVIDED

UNLESS OTHERWISE SPECIFIED DIMENSIONS ARE IN INCHES TOLERANCES ARE: FRACTIONS DECIMALS ANGLES ± .005 ± .01 ± .005	CONTRACT NO.	Coffin World Water Systems Design & Manufacture of Water Treatment Systems
	APPROVALS	
MATERIAL	DRAWN J. DUSZYNSKI	93.08.26
	CHECKED J. DUSZYNSKI	93.08.26
	DESIGNED	
APPROVED		
FINISH	THIS DRAWING CONTAINS PROPRIETARY INFORMATION AND SHALL NOT BE USED OR DISCLOSED WITHOUT PRIOR WRITTEN AUTHORIZATION.	
DO NOT SCALE DRAWING	SIZE D	DRAWING NO. 550-OCD
	SCALE NONE	REVISION A SHEET 1 OF 1